

GNP800

80 kW Dual High voltage generator
for optimization of dusting remove process



“Get your electrostatic precipitator boosted with a performing High voltage supply!”



Short-circuiter: for maximum safety.

GNP 800 is particularly dedicated to all ESP's designed with large streets. You will improve dust removal performances of your ESP with SAMES' GNP 800.

Its reduced sizes and weight make it user-friendly, easy to install and to run, maintenance operations required are mostly none and its autonomy is impressive.

The particular feature of GNP 800 is the dual-voltage ability: 80 kV - 1 Amp or 60 kV - 1.3 Amp are the two native switching tunable voltages. The earth connection is made automatically which improves greatly the safety.

With SAMES GNP, make your electrostatic precipitator the most efficient!

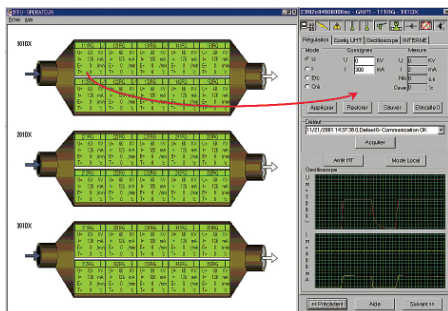
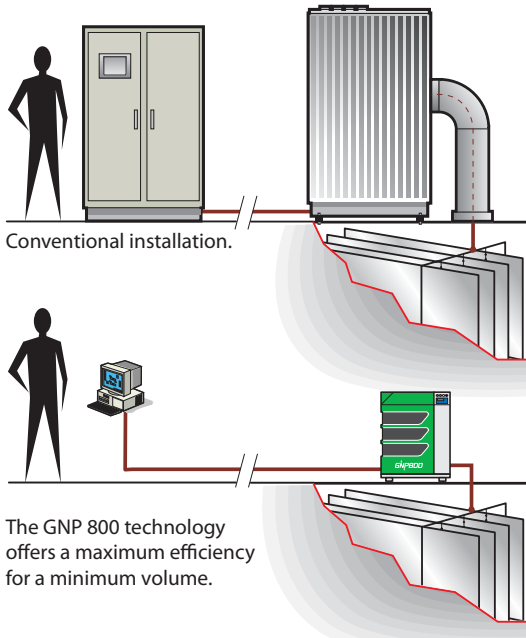
This 80 kW generator is a concentrate of last technologies in electronics and power. It does not require any control panel box all its control and power units hold in only one case:

- Control & regulation microprocessor
- Power supply electronics
- High Voltage unit

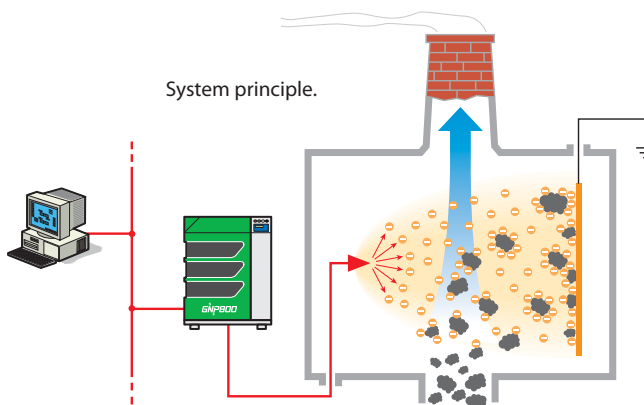
This high voltage unit is dedicated to all industrial using precipitator to clear rejected air : Electric power suppliers, Cement works, Steel works, Non-ferrous metal works, Glass factories, Wood industry, Household refuse incinerator...

GNP 800 allows the optimization in real time of functioning of the system in order to secure the best performances in dust cleaning.





Use friendly PC supervisor allows an individual or global control.



TECHNICAL FEATURES

General specifications

- Input voltage: 380/400 V AC-3 phase 50/60 Hz
- External temperature: -15/+45° C [Option: -30/+45° C]
- Efficiency: 94 %
- Ripple: 1 % peak to peak
- High Voltage: from 10 to 80 kV
- Current H.V.: 1A under 80 kV or 1.3A under 60 kV
- Power: 80 kW
- Transient response: 10 ms
- Voltage regulation: 0,5 %
- MTBF: 50 000 Hours
- Serial interface: RS 485 and optic fiber
- Protection factor: IP 54
- Standard CE/C1500 and CEM
- Dimensions: D: 850 x W: 700 x H: 950
- Weight: 250 Kg (500 Lbs)

Standard features

- Forced water cooling
- On/Off button
- Magneto-thermal circuit breaker protection
- High voltage On/Off on power relay
- Chopper/inverter IGBT
- High frequency transformer
- 3 levels multiplier
- Sparks detection (di/dt)
- Voltage/current regulation
- Sparks quantity regulation
- Crenel mode regulation
- Counter emission detection
- Possibility of parallel assembly
- 2 temperature detectors
- oscilloscope function
- local/distance running way (30 generator PC software)

Diagnostic indicators

- With lighting indicator:
 - HV on
 - Failure
- With graphical interface and fault messages screen
- With supervisor PC messages

Optional features

- PC-based Visual Basic software control package